

BATH LIFT

The CLARK Model 250
water powered bath lift



The **CLARK BATH LIFT** makes bathing easier for individuals who have difficulty getting into and out of the bath tub. Our bath lift provides the assistance and freedom to allow the therapeutic benefits of bathing in privacy and comfort. A hot bath eases the aches and pains of arthritis and relaxes muscles and joints. The **CLARK BATH LIFT** is recommended by healthcare professionals around the world.

Restores Independence & Increases Confidence

The **CLARK BATH LIFT** is ideal for people who have Arthritis, Muscular Dystrophy, Multiple Sclerosis, Quadriplegia, Hemiplegia, Paraplegia, Post Polio, Stroke, muscle loss in their legs, and other disabling conditions.

Kind Words From CLARK BATH LIFT Users

I have used the CLARK BATH LIFT for years and have found it to be a reliable product that has allowed me to bathe independent of assistance.

G. Voda, Chicago, IL

My ability to transfer from wheelchair to bath is greatly hindered. The transfer to and from the chair is easy with the swivel feature.

J. Speakman, Grover Hill, OH

Features

- Gently and safely lifts and lowers up to 300 lbs.
- Comfortable molded seat
- Swivels out over the tub sill to facilitate an easy transfer
- User is in full control at all times
- Aluminum and PVC construction for strength and durability
- No need for expensive battery replacements
- Lowers to 2" from the base of tub
- Independent swing up arms
- Ultra lightweight and modular design
- May qualify for third party reimbursement
- Rises approximately 1" per second

1035 - Stabilizer Bar



Call us at 905-238-6163 or 1-800-889-5295

Options

- Choice of swing up arms or no arms
- Choice of control valve on top of cylinder, left or right arm, or left or right side mount
- 21" or 23" cylinder height assembly for deeper tubs
- Stabilizer Kit (to prevent tilting)
- Tub Spout Diverter
- Child or Adult Head Rest

Advantages of Water Powered Bath Lifts

- Safe. No electricity is required.
- No costly batteries to replace.
- Easy to clean seat.
- More hygienic than cloth covered bath lift seats.
- Eliminates the need for caregiver or family assistance.

Installation

Place base assembly into tub. Place seat assembly piston tube into base bushing. Install shower diverter. Connect water supply hose from shower diverter to control valve. The **Clark Bath Lift** is now ready to use.

Operation

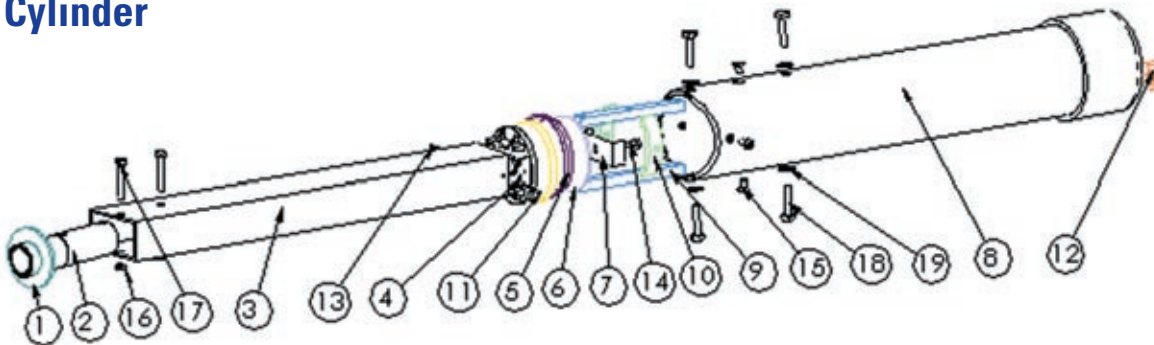
Turn on water to preferred bath temperature. Adjust flow of water through diverter valve to either the bath tub or the bath lift. Turn control valve to raise the bath lift to up position. Swivel the bath chair out over the tub sill to facilitate transfer from standing position, shower chair, or wheelchair. Swivel the chair back into the bath tub. Lower the bath chair by operating the control valve lever. (Lever is mounted on arm or cylinder top, depending on option selected.) May be stopped at any time by centering control valve.

Specifications

CAPACITY:	300 lbs
POWER:	Household water pressure (min. 30 psi)
CONTROL:	Brass lever control valve
LIFT HEIGHT:	18" standard, Optional 21" or 23"
WEIGHT:	22-1/2 lbs.
SEAT:	Width 17" and Depth 16"

CONSTRUCTION:	Aluminum and PVC, powder coated white
DIMENSIONS:	32" X 21" X 22"
WARRANTY:	2 Year limited warranty on all parts except on rubber components. Lifetime warranty on frame.

Bath Lift Cylinder



LEGEND

1. Pivot Shaft Washer	6. Stiffener	11. Piston Guide Top	16. Hex Nut
2. Pivot Shaft	7. Bottom Stop	12. Brass Elbow	17. Hex Head Bolt
3. Piston Tube	8. Cylinder	13. Pop Rivets	18. Seat Mounting Bolt
4. Piston Top	9. Seat Mounting Bar	14. Hex Head Bolt	19. Seat Mounting Bolt Washer
5. Cup Seal	10. Bottom Piston Guide	15. Flat Head Screw	